



Food Insecurity, Its Measurements, Its Methods, and Its Application To Virginia

Courtney Maynard



1

Introduction to the Topic



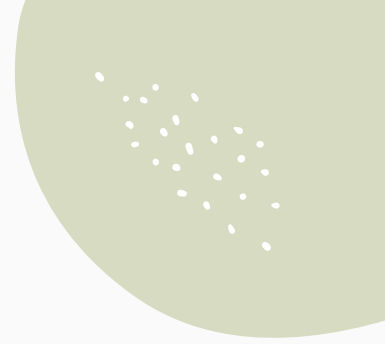
USDA

“a house-hold level economic and social condition of limited or uncertain access to adequate food,”

“a household’s inability to provide enough food for every person to live an active and healthy life”



Feeding
America



Measurements of Food Insecurity

1

Availability

2

Accessibility

3

Affordability

4

Accomodation

5

Acceptability





Availability

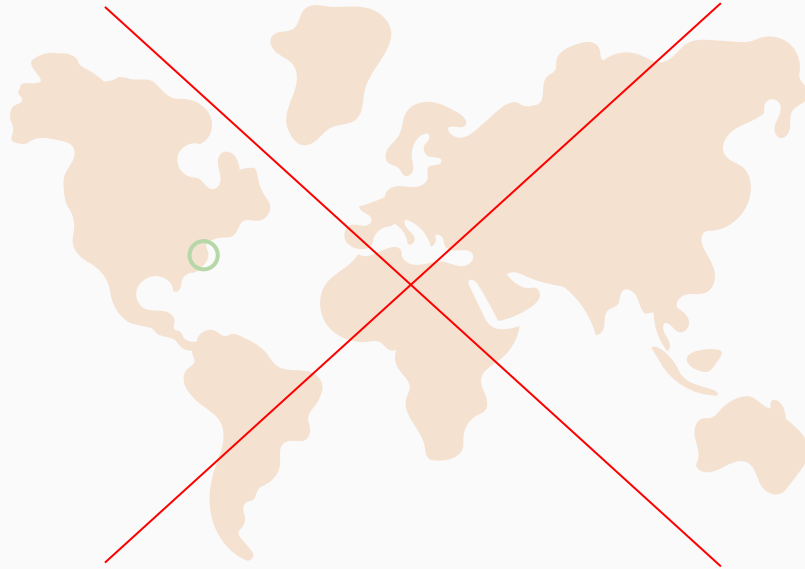




Accessibility



local level > global level





2

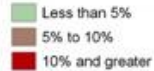
Methods

Population Density

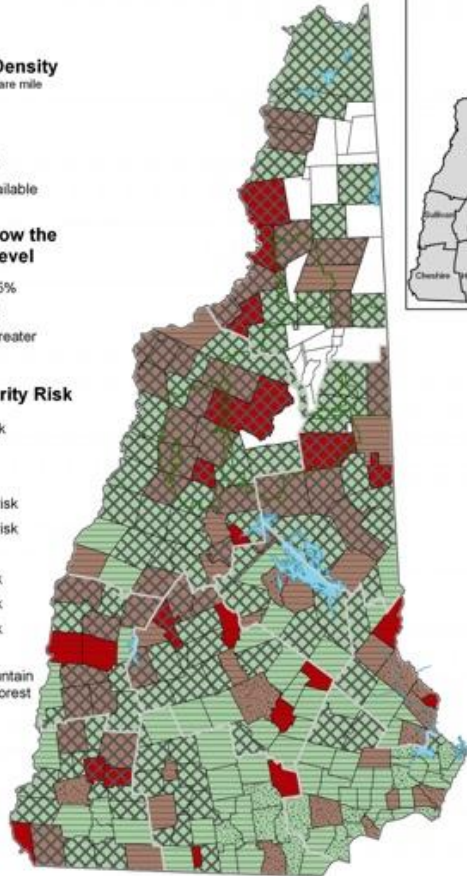
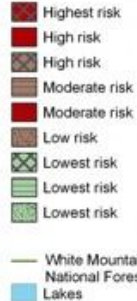
Persons per square mile



Families Below the Poverty Level



Food Insecurity Risk

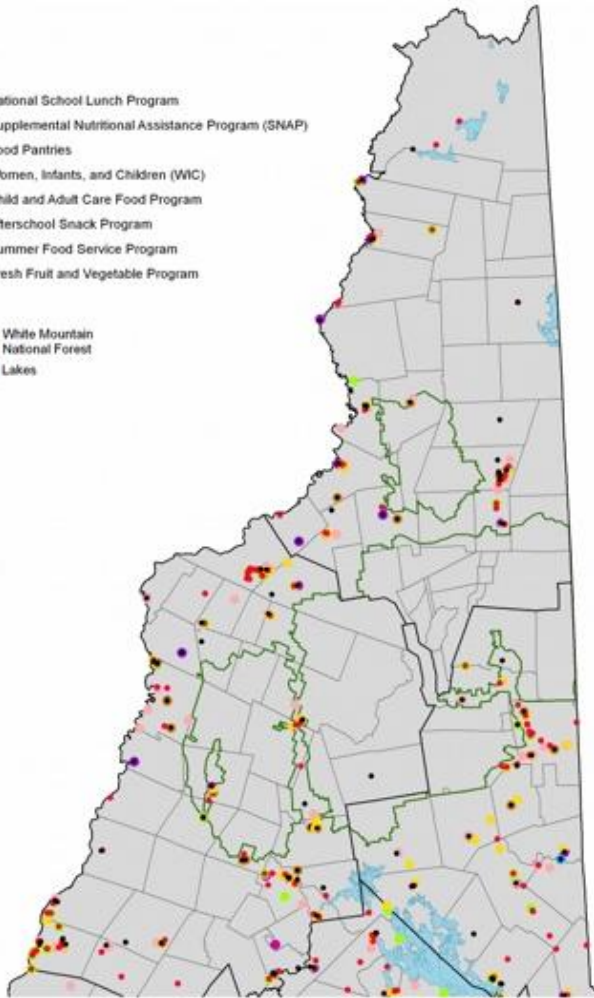


- The Three Parameters:
- Population density
 - Percentage of families below the poverty line
 - Food insecurity risk

- National School Lunch Program
- Supplemental Nutritional Assistance Program (SNAP)
- Food Pantries
- Women, Infants, and Children (WIC)
- Child and Adult Care Food Program
- Afterschool Snack Program
- Summer Food Service Program
- Fresh Fruit and Vegetable Program

— White Mountain
National Forest

■ Lakes






Parameters Used In Ranking Block Groups

“Yes” = > Nat. Av.

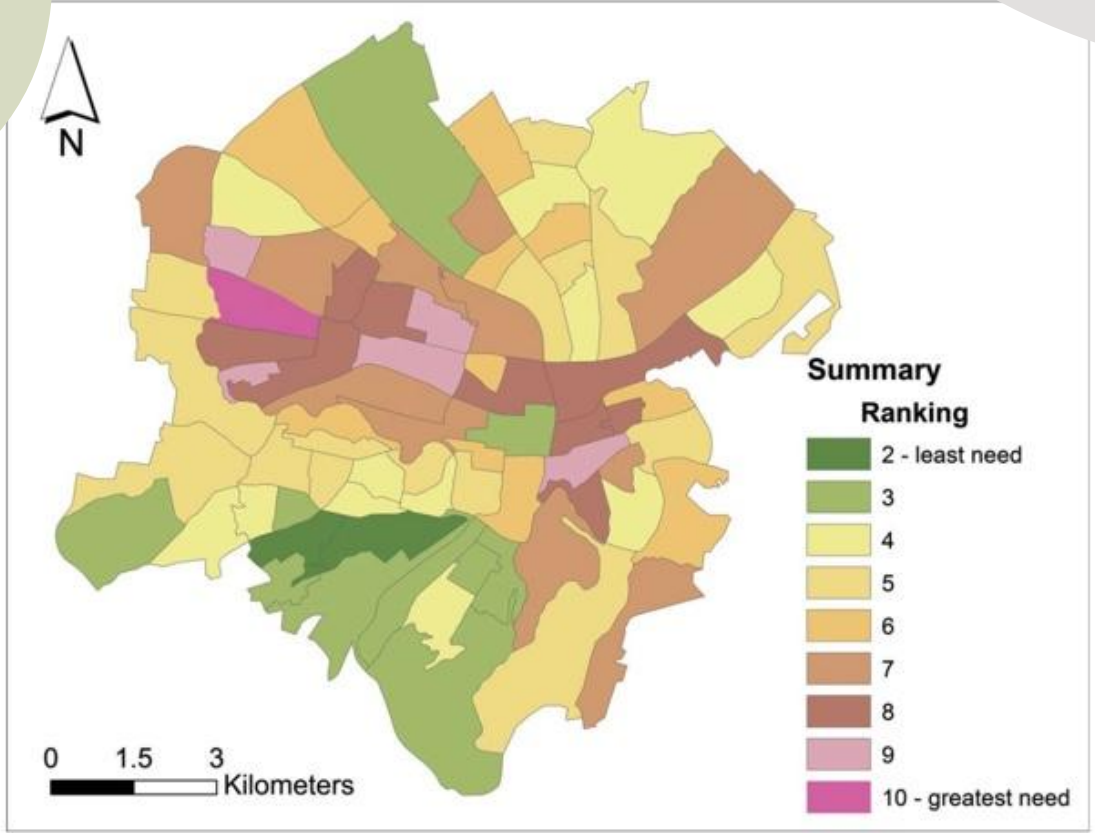
- student eligibility rate per elem. school for NSLP
- poverty rate
- unemployment rate
- % of pop < high school diploma
- % female-headed households
- % of children

“Yes” = Needs Presence

- 1 park
 - 2 community garden or farm
 - 3 supermarket or superstore
- 

Food group from MyPlate^a	Specific food or beverage	Food stores offering item (%)
Grains		Whole-grain breads
Fruit	To be encouraged	Apples (fresh)
		Bananas (fresh)
Vegetables	To be limited	Oranges (fresh)
		Fruit canned in sugar syrup
		Leafy greens (fresh)
		Onions (fresh)
		Peppers (fresh)
		Tomatoes (fresh)
		Hot dogs
Protein foods		Lowfat hot dogs
		Turkey dogs
Milk	To be encouraged	Eggs
		Beans
100% fruit juice	To be limited	Tuna (canned)
		2% or low-fat milk
		Whole milk
		Orange juice only

^aBased on ChooseMyPlate.gov food categories.





3

What's the Gap?

possible gaps

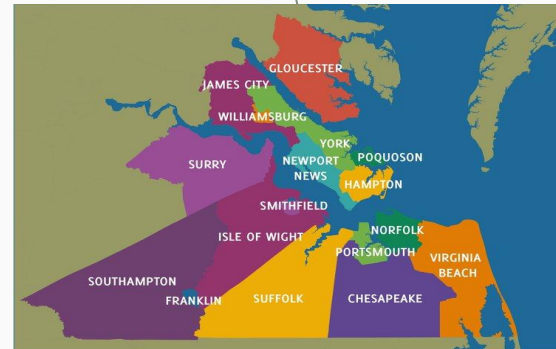
neighborhood?



transportation?



Hampton Roads?





**how does food
accessibility contribute
to food insecurity in
the Hampton Roads
region of Virginia?**



4

Potential Research Plan

research plan

divide

Demographic data → risk of food insecurity

Census block groups

Using New Hampshire study's method

survey

Quality and availability of food

Using Roanoke study's method

measure





Questions?

Credits: This presentation template was created by **Slidesgo**, including icons by **Flaticon**, and infographics & images by **Freepik**.

Please keep this slide for attribution